
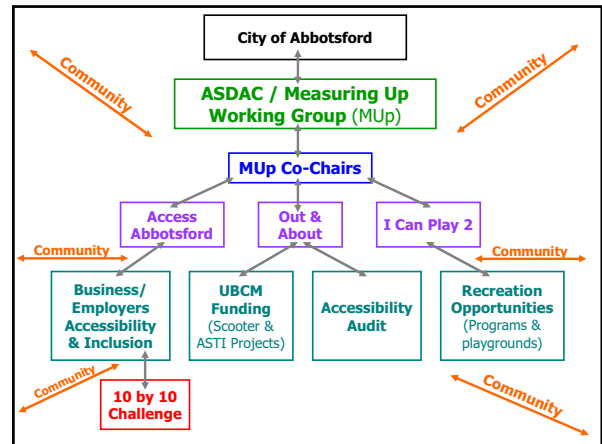


Abbotsford's 10 By 10 Challenge


Annette Borrows, Measuring Up Working Group
Jodi Newnham, Social Planner, City of Abbotsford

Minister's Council on Employment for
Persons with Disabilities February 25, 2008

10 By 10 Challenge

- Receiving employers' requests for staff
 - Abbotsford job developers
- Brochure and letter from Mayor
- Cultural Diversity Awards
- Business Leadership Network



Ensuring Success

- Promotion
 - Press coverage
- Recognition of Businesses
- Staff support
 - Mystery shopper



Thank you!

Annette Borrows
Annette.borrows@southfraser.com
604-864-5770 local 310

Jodi Newnham
jnewnham@abbotsford.ca
604-851-4192

